

Influenza Update

December 14, 2009

The Influenza A (H1N1) (Swine flu) strain is currently circulating in Florida. At this point in time, it may be assumed that an individual presenting with influenza-like illness (ILI) has the H1N1 strain, prompting medical treatment as indicated without conducting laboratory testing. Early empiric treatment with oseltamivir or zanamivir should be considered for persons with suspected or confirmed influenza who are at higher risk for complications.

Helpful Links:

Florida Department of Health – H1N1 (Swine Flu) Information Page:
<http://www.myflusafety.com/>

FDOH H1N1 (Swine) Influenza Updates:
http://www.doh.state.fl.us/disease_ctrl/epi/swineflu/index.html

CDC Vaccine Information:
www.cdc.gov/h1n1flu/vaccination/

Link for providers interested in offering the H1N1 Vaccine:
<https://www.flshots.com/>

Florida Flu Hotline
 1-877-352-3581

This Week: During the week of Nov. 29-Dec. 5, 2009, influenza activity continued to decrease in the United States. Flu activity is widespread in 14 states. This is compared to 25 states reporting widespread activity during Wk 47. Nationally, visits to doctors for ILI continue to decline, but are still high. Flu activity within FL demonstrates decreasing trends. Locally, the percent of emergency department visits for ILI remained nearly unchanged from 3.55% in Wk 48 to 3.18% in Wk 49.

Symptoms: ILI is defined as fever accompanied by a cough and/or sore throat. While most ill individuals have recovered without medical treatment, hospitalizations and deaths from infection may occur. Individuals considered “high risk” for serious complications are people 65 yrs & older, children younger than 5 yrs old, pregnant women, and people of any age with certain chronic medical conditions.

Prevention: Frequent hand washing and respiratory etiquette are important tools for flu prevention. Those ill should remain home until they are fever free for 24 hours without use of fever-reducing medicine. Per CDC’s revised guidance, healthcare workers may follow the same exclusionary guidance unless working directly with immunocompromised patients, in which case they should stay home for 7 days from the onset of illness or 24 hours after your symptoms have fully resolved, whichever is longer. Anyone with severe illness, such as prolonged fever or difficulty breathing, should seek prompt medical attention.

For Providers: A specific virologic diagnosis of infection with the new virus is not currently needed for clinical or public health purposes for most people with ILI. For those for whom it is indicated, treatment with oseltamivir or zanamivir should be started early based on a clinical diagnosis of influenza, unless there is a contraindication, and should **NOT** wait for laboratory confirmation. Rapid bedside tests for Influenza A have varying sensitivity and specificity. Both false positives and false negatives results may occur.



Respiratory protection: The CDC recommends all healthcare personnel who enter the rooms of patients in isolation with confirmed, suspected, or probable H1N1 influenza don a N95 respirator. Guidance:
http://www.cdc.gov/h1n1flu/guidelines_infection_control.htm

Antiviral Update: CDC Health Alert Network (HAN) Info Service Message: Key Issues for Clinicians Concerning Antiviral Treatments for 2009 H1N1 -
<http://www.cdc.gov/H1N1flu/HAN/110609.htm>

Vaccine Information: 2009 H1N1 vaccination has continued as vaccine becomes available. More doses are expected to arrive each week. A list of local sites offering vaccine can be found here:
<http://www.dchd.net/h1n1vaccineinfo.htm>

DCHD Immunization Center
 5220 Pearl Street, Jacksonville, Florida 32206
 Monday – Friday, 8:00a – 4:00p & 5:30p – 8:00p

DCHD Administrative Building
 900 University Boulevard, North
 Saturday, December 19 only - 9:00 a.m. – 3:00 p.m.

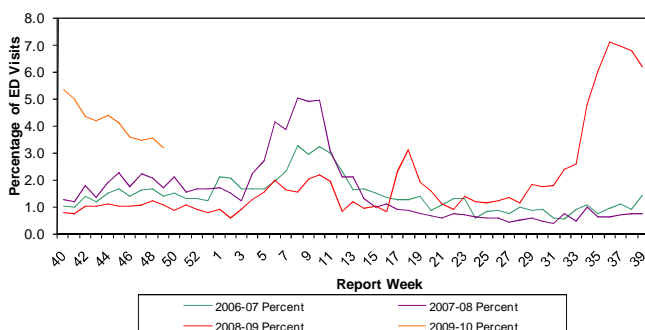
Wesconnett Family Health Center
 5150-9 Timuquana Rd. Jacksonville, FL 32210
 Saturdays - 9:00 a.m. – 3:00 p.m.

DCHD Vaccine Allocations:

- Total vaccines exported as of 12/14/09: 209,200 (169,900 IV and 39,300 LAIV)

The priority groups recommended to receive the 2009 H1N1 influenza vaccine include: 1) Pregnant women; 2) Household contacts and caregivers for children younger than 6 months of age; 3) Healthcare and emergency medical services personnel; All people from 6 months through 24 years of age; and 4) Persons aged 25 through 64 years who have health conditions associated with higher risk of medical complications from influenza.

Percentage of Influenza-Like Illness from Emergency Department Chief Complaints, Florida ESSENCE - Duval County Participating Hospitals (n=8), 2006-2009



Influenza Hospitalizations and Deaths

	US (CDC)*	Florida	Duval County
Hospitalizations	33,490	1,159	55**
Hospitalizations* (new this week)	2,170	17	0
Deaths	1,445	180	13
Deaths* (new this week)	109	6	0

*Newly reported as of August 30, 2009: laboratory-confirmed influenza hospitalizations and deaths

**Hospitalizations include the number of reported deaths