



Duval County Novel H1N1 Influenza Immunization Campaign

October 15, 2009



Public Health
Prevent. Promote. Protect.

Outline

- **Overview**
- **Vaccine availability and timing**
- **Who will be targeted for vaccination**
- **Where those will get their vaccine**
- **Reporting vaccine usage**
- **References**



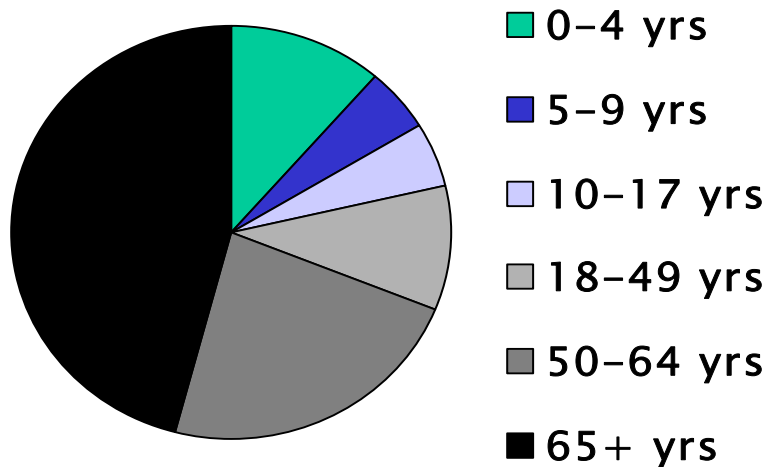
H1N1 Flu Overview

- In April 2009, novel influenza A (H1N1) virus was identified as cause of influenza in Mexico and U.S.
- On June 11, WHO declared a worldwide pandemic
- Symptoms are similar to those of seasonal flu
- Age distribution of illness, hospitalizations and deaths is different than seasonal flu

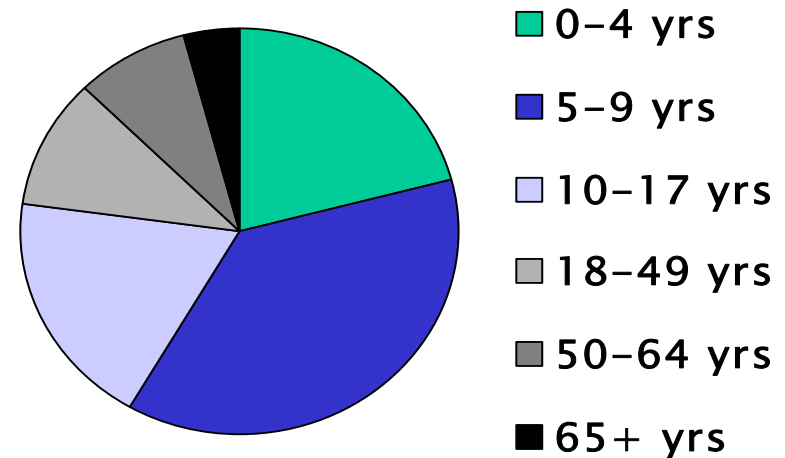


Teens & Young Adults Disproportionately Affected – Few Cases Among Elderly

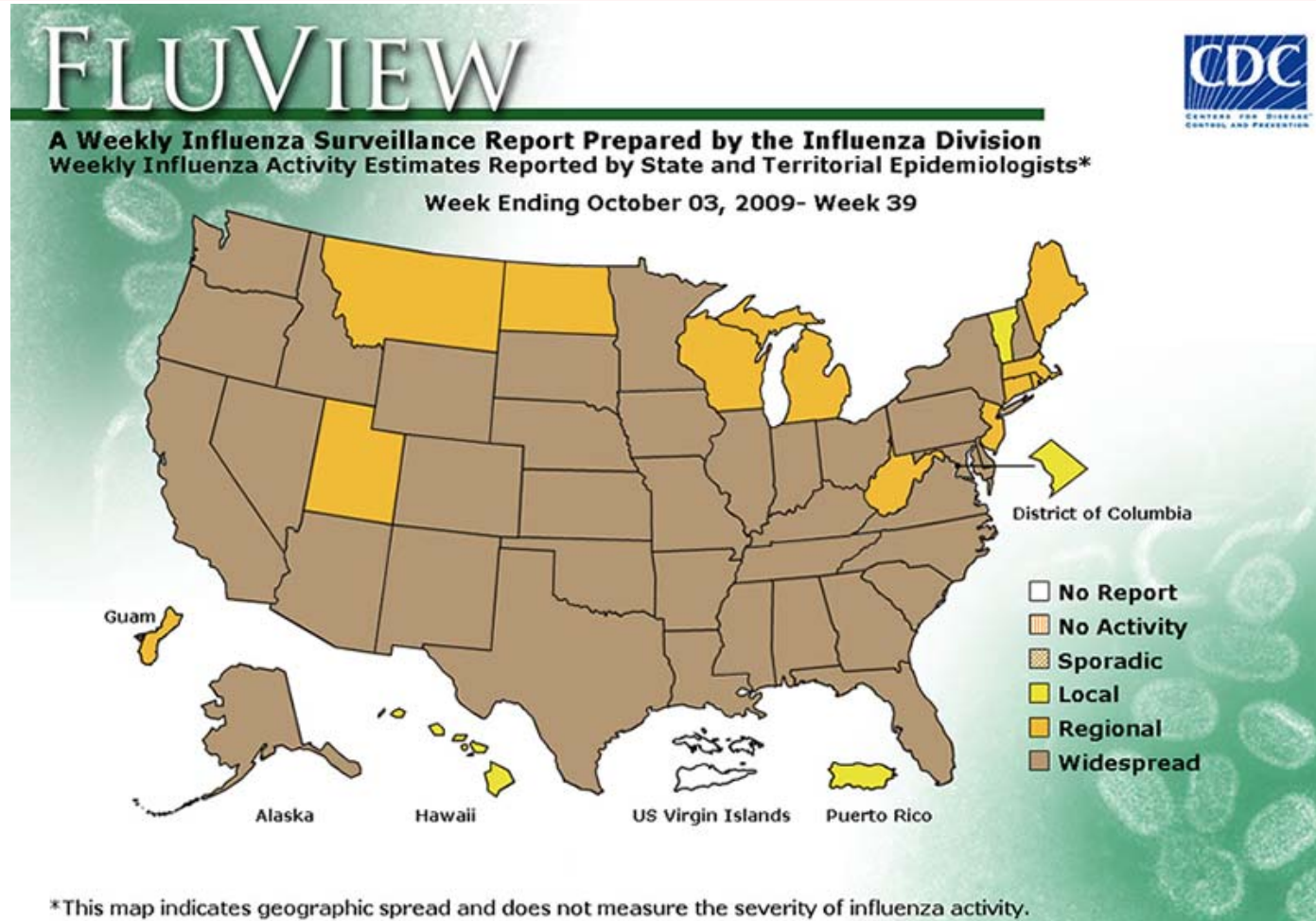
Seasonal Flu 2007–08



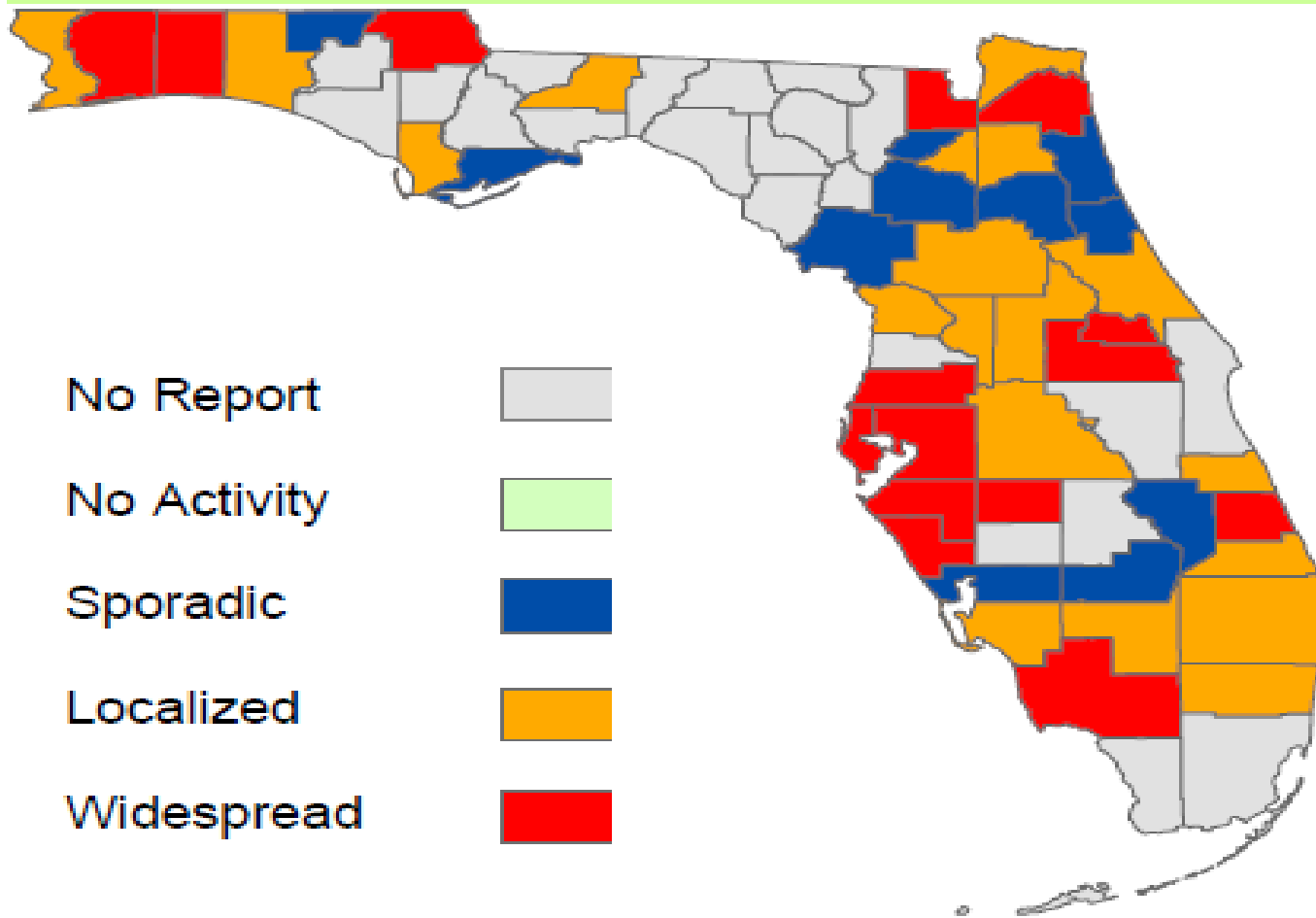
2009 H1N1 (April–Jun)



Weekly Flu Activity Report



**MAP 3: Weekly County Influenza Activity
for Week 39 (ending October 3, 2009) as
Reported by 6:30 p.m. October 6, 2009**

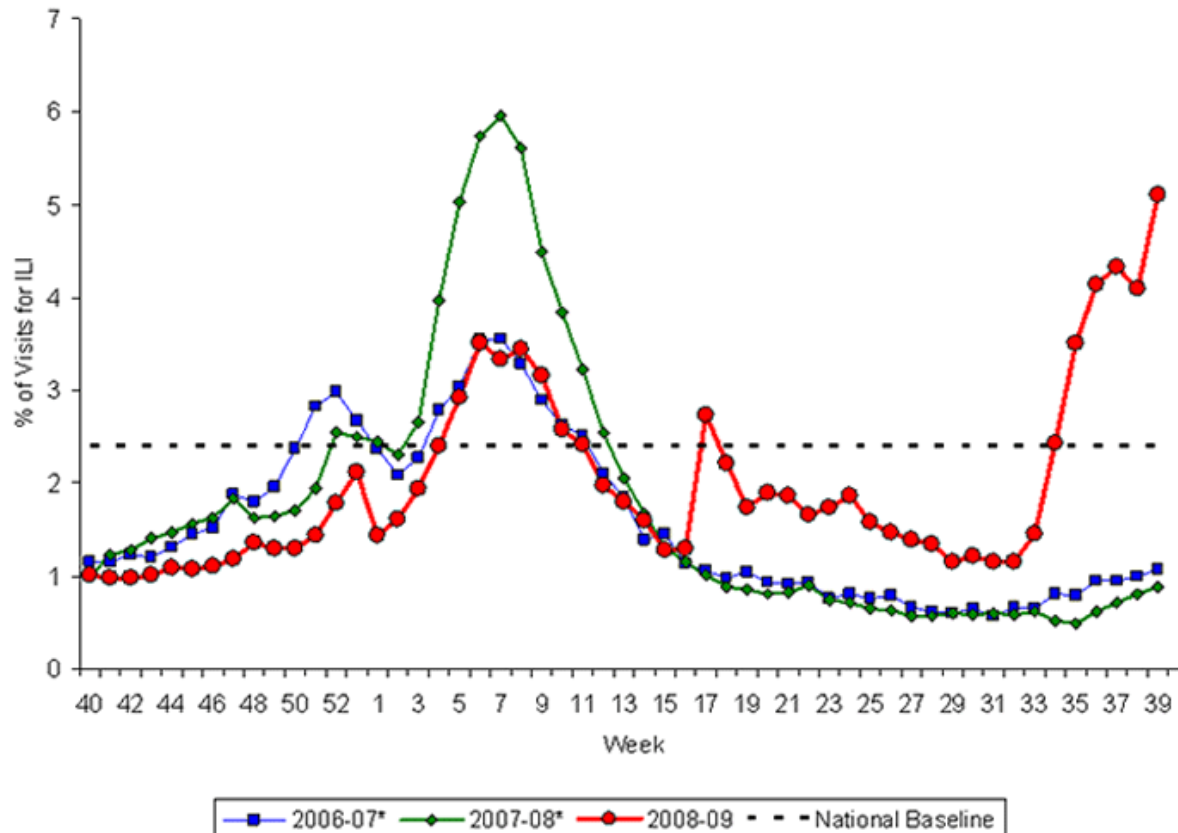




Percentage of Influenza-like Illness (ILI) Visits Reported by the U.S. Outpatient ILI Surveillance Network: 2006-2009



(For Week Ending October 3, 2009)

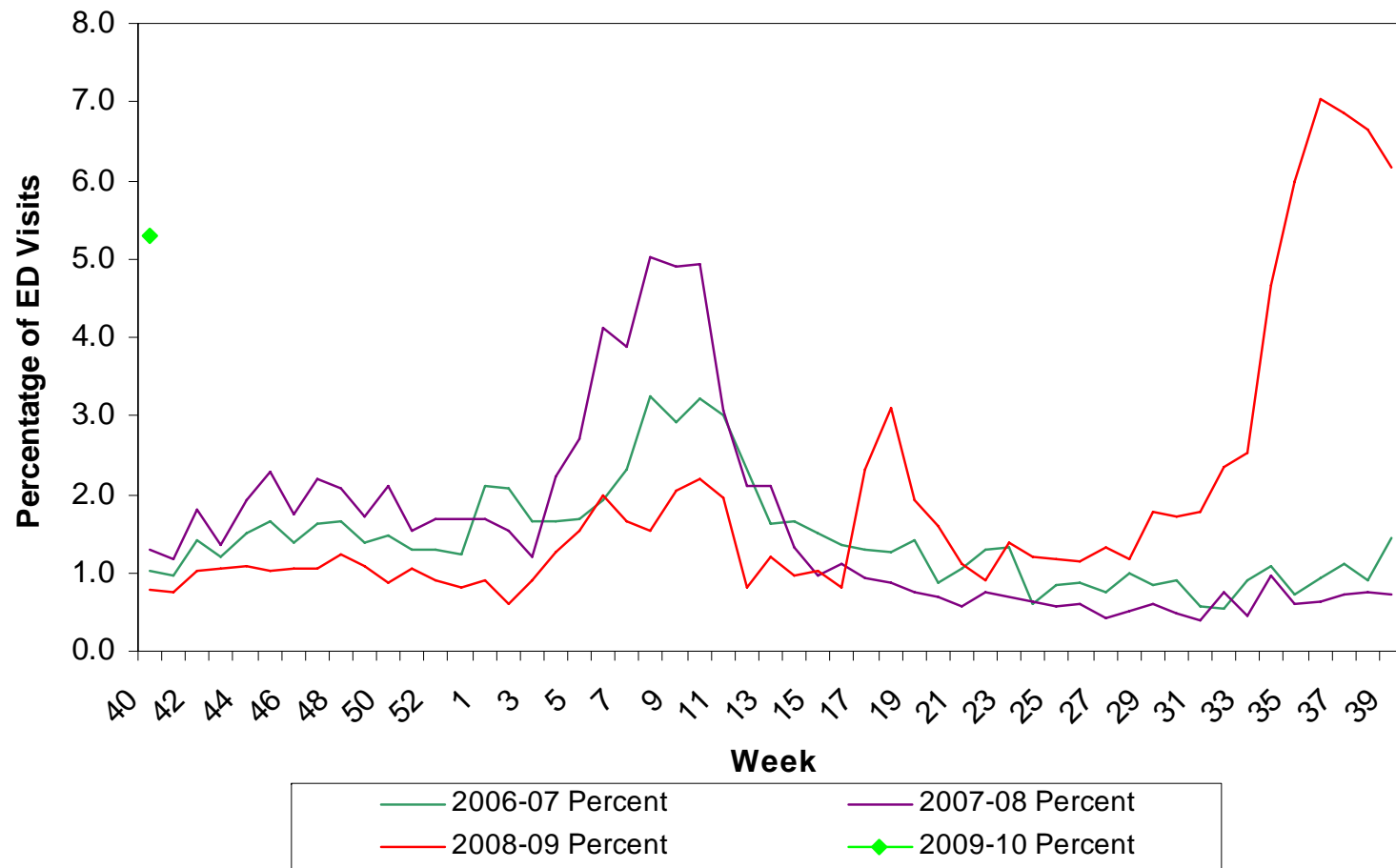


Public Health
Prevent. Promote. Protect.

*There was no week 53 during the 2006-07 and 2007-08 seasons, therefore the week 53 data point for those seasons is an average of weeks 52 and 1.



Percentage of Influenza-Like Illness from Emergency Department Chief Complaints, Florida ESSENCE: 8 Duval County Hospitals, 2006-2009



H1N1 Hospitalizations and Deaths

Oct. 9, 2009

	US (CDC)*	Florida	Duval County
Hospitalizations	12,384	808	36
Hospitalizations (new this week)	-	41	3
Deaths	1,544	110	12
Deaths (new this week)	165	8	1

*Newly reported as of August 30, 2009 using new influenza and pneumonia hospitalizations and deaths web-based reporting system that will be used to monitor trends in activity.



April – October Duval County Joint Emergency Response Activities

- **Guidance to the public**
 - **Press conferences, media interviews**
 - **Website postings**
 - **Letters to parents**
- **Guidance to organizations**
 - **Teleconferences for community groups, businesses**
- **Guidance for specific groups/settings**
 - **Long term care facilities, homeless coalition, shelters, emergency responders, schools, and jails**
- **Guidance to health care providers**
 - **Clinical guidance**
 - **Teleconferences**
 - **Clinician consultation**
- **Case/outbreak investigation**
- **Lab testing**
- **Data analysis**
- **Coordinate with partners, state, and federal government**
- **Receipt of antiviral stockpile**



Seasonal Flu and H1N1 Vaccine

Vaccine Availability and Timing

• Seasonal vaccine
availability

September

2009

Expected date the H1N1
vaccine will be available

Mid-October, 2009

- H1N1 vaccine ordering and distribution will be coordinated by FDOH & county health departments, using www.flshots.com procedures



H1N1 Vaccine Shipments

- **Expected for Week Ending 10-16-09**
 - Nasal spray : 13,100 doses
 - Multi-dose vials: 5,100 doses
 - Pre-filled syringes: 600 doses



H1N1 Flu Vaccine Production and Testing

- Approved by FDA after rigorous testing
- Vaccine products:
 - Live attenuated nasal spray (109,900 doses)
 - Preservative–containing inactivated vaccine multi-dose vials (307,200 doses for Duval County)
 - Preservative free inactivated vaccine pre-filled syringes (114,200 doses)
- Storage and handling like seasonal flu



Novel H1N1 Vaccine

Population Priorities

-
- Initial groups targeted for vaccination (not in priority order)
 - Pregnant Women
 - Household contacts and caregivers for children younger than six months of age
 - Healthcare and emergency medical services personnel
 - All people six months through 24 years of age
 - Persons 25 years through 64 years of age who have health conditions associated with higher risk of medical complications from influenza
 - Once the groups above have been served, healthy individuals 25 years of age and older will be offered vaccine



Target Priority-Sub Groups

- Pregnant women (9,436-15,536)
- Healthcare and emergency medical services personnel (32,706-39,805)
- Children 6 months to 4 years of age (65,903)
- Household contacts and caregivers for children younger than 6 months of age (13,101-21,741)
- Persons aged 5 through 18 years who have health conditions associated with higher risk of medical complications from influenza (3,746-17,265)



Total = 124,892-170,250

Distribution Process

- CDC contracting with McKesson to distribute vaccine and supplies
- Allows shipment to providers serving target groups
- Vaccine available in increments of 100 doses per package
- Registration in www.flshots.com strongly encouraged
- Local health departments in Florida will have initial approval authority over orders placed in their respective counties



Financial Issues

- Providers may charge administration fee to patient, health insurance plan, or other third party payer
- Administration fee can not exceed regional Medicare rate for FL (~\$20)
- May administer the vaccine for free to persons who can't afford administration fee, or refer to public clinic
- May not charge patients or other payers for vaccination supplies or needles



Reporting Novel H1N1 Vaccine Usage

- FDOH will be required to report vaccine usage by age group and by first or second dose to the CDC.
- Providers administering the vaccine will also need to report vaccine usage to FDOH on a weekly basis through Florida Shots
- The National Vaccine Adverse Event Reporting System (VAERS) will be used to report reactions to vaccines to FDOH



Public Clinics

- If needed, H1N1 high-risk mass vaccination clinics will be scheduled
 - Will target school-aged children in daycares, public and private schools, after hours and on weekends
 - Will be free of charge
- Will make vaccine widely available such that anyone ultimately wanting protection can easily get it at private or public facility





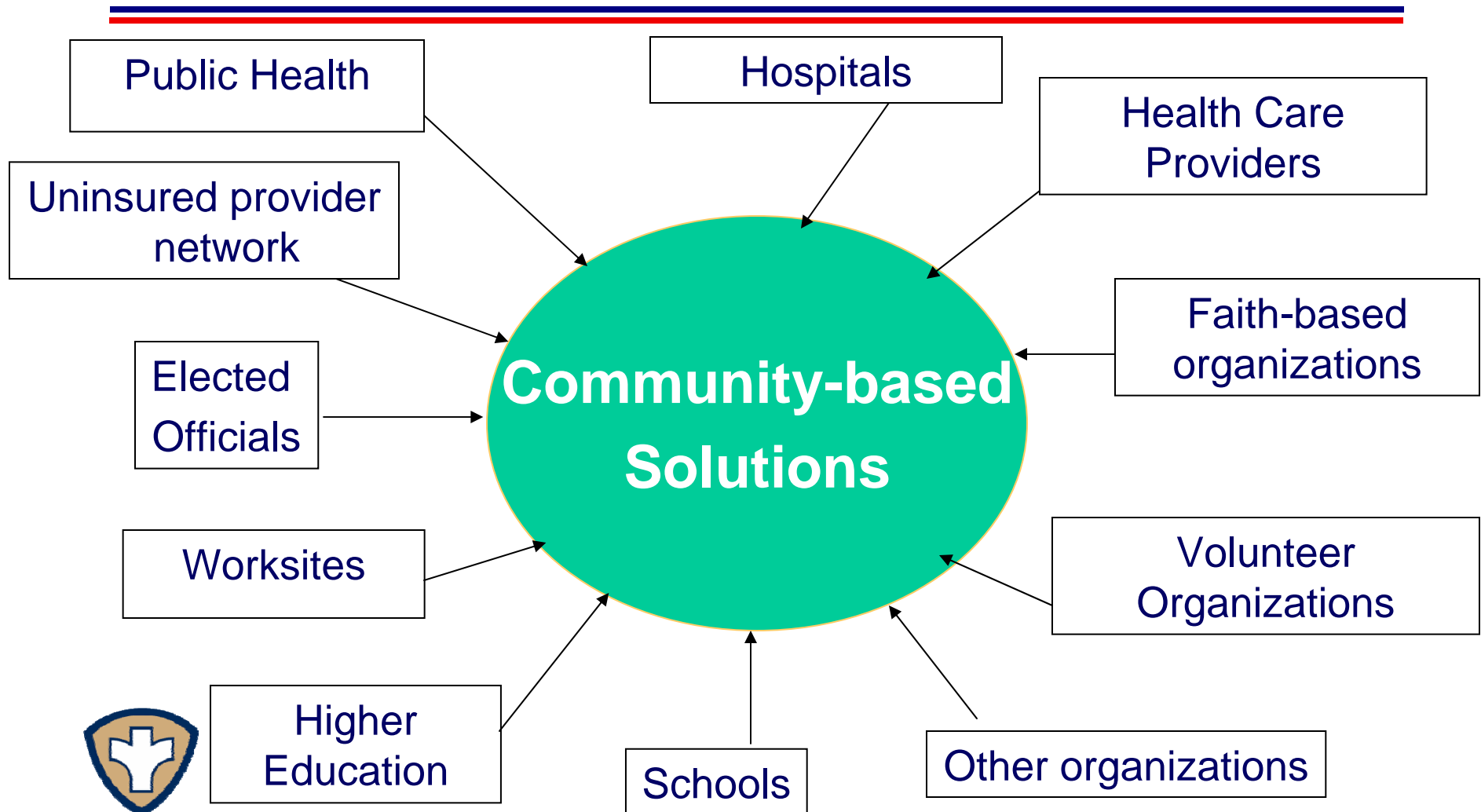
Duval County Partner H1N1 Flu Vaccination Sites (10-12-09)



Category	# distribution sites approved
Pharmacies	4 (>100 locations)
Sub-specialty physician offices	41
Pediatricians	40
OB/GYNs	5 (multiple locations)
Family Practice	37
Hospitals	9
Urgent care centers	7 (multiple locations)
Other	18
Total	161



Meeting Duval's Health Challenges Requires Effective Collaboration



Novel H1N1 Vaccine Key Points

- Seek seasonal influenza vaccine as soon as vaccine is available
- Healthcare providers encouraged to register with FDOH to declare their vaccine needs (www.flshots.com)
- Anyone in a group targeted for novel H1N1 virus vaccination should be vaccinated as soon as the vaccine becomes available
- As guidance is available, FDOH will post information on www.myflusafety.com



References

www.dchd.net

www.myflusafety.com

www.flshots.com

www.flu.gov

[1-877-352-3581](tel:1-877-352-3581)

